

**INFINITY CAPTURE** is an intuitive user interface which includes all of the basic features needed to control your INFINITY camera and capture images.



# INFINITY CAPTURE

IMAGING SOFTWARE

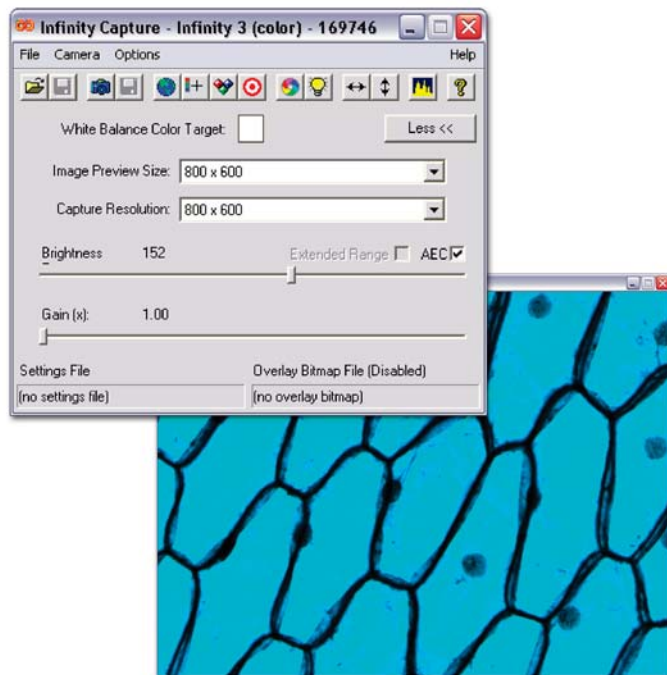


Lumenera's entry-level software is included with all INFINITY USB 2.0 cameras.

**Features include:**

- Real Time Video Preview
- Separate Preview and Capture Controls
- Automatic/Manual White Balance
- Manual Hue and Saturation
- Manual Preview Quality
- Multiple Image Averaging
- Global Electronic Gain
- Manual Contrast/Brightness/Gamma
- Automatic/Manual Exposure
- Overlay Bitmaps
- Flat Field Correction
- Highlight Saturated Pixels
- Manual Preview Zoom Level
- Preview Histogram
- User Defined Light Source
- Alpha Blended Bitmaps

Additionally, a USB 2.0 plug-and-play interface removes the need for framegrabbers and allows fast video. Included is a TWAIN interface, allowing the camera to be used with 3rd party software applications.



7 Capella Court, Ottawa, ON, Canada K2E 8A7  
**Phone:** 1.613.736.4077 **Fax:** 1.613.736.4071 [www.lumenera.com](http://www.lumenera.com)

Professionally marketed by:  
 CANIMPEX / CPX-SOLUTIONS  
 Tel/Fax - North America 1.902.457-0975  
 Tel - Europe 49 [0] 69 380 976 588  
 info@cpx-solutions or admin@canimpex.ns.ca  
[www.cpx-solutions.com](http://www.cpx-solutions.com) - [www.CanDigiCam.com](http://www.CanDigiCam.com)