



## 1.5 Megapixel CMOS USB2.0 Camera

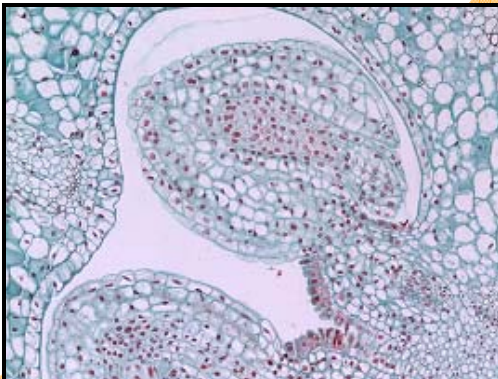
High Resolution CMOS Color Microscopy Camera specifically designed for the applications in education and hobby use for **live image viewing, video projection and image capture**

Yours from

**CANIMPEX / CPX-SOLUTIONS**

## Outline

Lumenera introduces **INFINITY *lite*** – a compact, affordable, high resolution microscopy camera perfectly suited for the Educational use. This 1.5 megapixel camera offers features that include 15 fps at full 1440x1080 resolution, plug-and-play USB 2.0 interface, and delivers outstanding image quality and value.



Live video viewing provides for real-time focus, while auto exposure and auto white balance can efficiently capture your optimal image. An intuitive user application provides camera controls, while full integration to popular third-party imaging applications is available through our TWAIN drivers.

The **INFINITY *lite***'s USB 2.0 interface, standard C-mount and compact design provide trouble-free installation and make this an ideal solution for teaching facilities. One standard cable for power and data minimizes clutter. No framegrabber required.

INFINITY cameras are supported by an experienced team of technical support and imaging experts. We understand your imaging needs and are here to help you get the most out of your camera.

## Performance Features

- ❑ High resolution microscopy camera specifically designed the Educational Market
- ❑ High-speed USB 2.0 interface eliminates a framegrabber and facilitates ease of installation on both laptop and desktop computers
- ❑ On-board image processing of the INFINITY *lite*'s progressive scan 1.5 megapixel image sensor results in accurate color fidelity
- ❑ Full color sub-windowing allows for rapid, focus and scanning of samples: 15 fps at full 1440x1080 resolution and 60 fps at 640x480 resolution
- ❑ 8-bit pixel data modes
- ❑ INFINITY CAPTURE software application
- ❑ Camera control through an intuitive user TWAIN interface results in rapid image capture archiving and documentation for high throughput applications, demanding research environments and teaching facilities
- ❑ The INFINITY *lite* has a compact design equipped with a C-Mount, facilitating installation on all microscope configurations including upright, inverted and stereo
- ❑ INFINITY *lite* cameras are software compatible with Windows™ 98 SE, Windows ME, Windows 2K and Windows XP operating systems

## Camera Sensor

Image Sensor	1/2.5" CMOS format, color, 6.04mmx4.5mm
Effective Pixels	1440x1080, 4.2µm square pixels
Frame Rate	15 fps at 1440x1080, 60 fps at 640x480
Dynamic Range	>60dB
Digital Output	8-bit uncompressed
Read Noise	20 e- rms

## Camera Controls

Mass	TBD
Power Requirement	USB bus power
Operating Temperature	0° C to +50° C
Operating Humidity	5%-95%, Non-condensing
Integration Time	1/1000 to 3 sec.
Shutter	Rolling shutter with single frame capture
ROI	User Selectable
Auto Exposure	Automatic / Manual
White Balance	Automatic / Manual
Gain	Programmable / 1 to 10X optimizable
Interface Connector	USB 2.0 high-speed interface
Dimensions (L x W x H)	TBD
Lens Mount	C-Mount lens adapter

## Recommended PC Specs:

- Pentium 4, 1.3 GHz or higher
- 512 Mb RAM
- 60 MB hard drive free space or more
- USB 2.0 Port
- Windows 2000 or XP

## Minimum PC Specs:

- 600 MHz Processor
- 256 MB of SDRAM
- 20 MB hard drive free space
- USB 2.0 Port
- Windows 98 or ME

## Product Includes:

- INFINITY *lite* digital camera for USB 2.0
- CD-ROM with INFINITY CAPTURE user application software
- TWAIN driver
- Documentation
- USB 2.0 cable

## PROFESSIONALLY MARKETING BY:

**CANIMPEX** Enterprises Ltd.

[www.canimpex.ns.ca](http://www.canimpex.ns.ca) – [admin@canimpex.ns.ca](mailto:admin@canimpex.ns.ca)

Tel/Fax +1.902.457-0975

**CPX-SOLUTIONS**

[www.cpx-solutions.com](http://www.cpx-solutions.com) – [info@cpx-solutions.com](mailto:info@cpx-solutions.com)